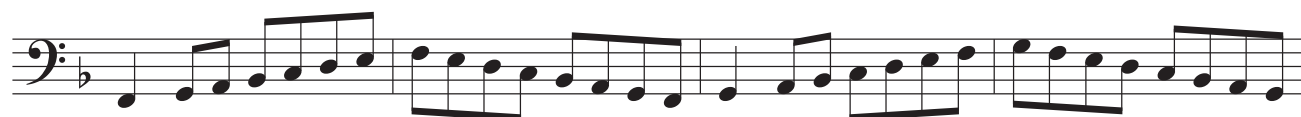


Rotating Major Scales for Trombone/Euphonium

E



F



Rotating Major Scales
for Trombone/Euphonium

Gb

The Gb major scale is written in bass clef with a key signature of three flats (Bb, Eb, Ab). The scale is presented in four staves, each containing four measures. The first staff shows the scale from Gb to Gb. The second staff continues from Ab to Ab. The third staff continues from Bb to Bb. The fourth staff continues from Cb to Cb and concludes with a final Gb note and a fermata.

G

The G major scale is written in bass clef with a key signature of one sharp (F#). The scale is presented in four staves, each containing four measures. The first staff shows the scale from G to G. The second staff continues from Ab to Ab. The third staff continues from B to B. The fourth staff continues from C to C and concludes with a final G note and a fermata.

Rotating Major Scales
for Trombone/Euphonium

Ab

Musical notation for the Ab major scale in bass clef, consisting of four staves. The first staff shows the scale starting on Ab. The second and third staves show the scale ascending and then descending. The fourth staff shows the scale ascending and then descending, ending with a final note and a fermata.

A

Musical notation for the A major scale in bass clef, consisting of four staves. The first staff shows the scale starting on A. The second and third staves show the scale ascending and then descending. The fourth staff shows the scale ascending and then descending, ending with a final note and a fermata.

Rotating Major Scales
for Trombone/Euphonium

Bb

Four staves of musical notation for the Bb major scale in bass clef. The first staff shows the scale from Bb2 to Bb4. The second staff continues from Bb4 to Bb5. The third staff continues from Bb5 to Bb6. The fourth staff shows the scale from Bb6 to Bb7, ending with a fermata.

B

Four staves of musical notation for the B major scale in bass clef. The first staff shows the scale from B2 to B4. The second staff continues from B4 to B5. The third staff continues from B5 to B6. The fourth staff shows the scale from B6 to B7, ending with a fermata.

Rotating Major Scales
for Trombone/Euphonium

C

The C major scale in bass clef is presented across four staves. The first three staves show the scale in ascending and descending directions, with each staff containing two measures. The fourth staff shows the scale ascending and then descending, ending with a final whole note on C.

Db

The D-flat major scale in bass clef is presented across four staves. The first three staves show the scale in ascending and descending directions, with each staff containing two measures. The fourth staff shows the scale ascending and then descending, ending with a final whole note on D-flat.

Rotating Major Scales
for Trombone/Euphonium

D

Musical notation for the D major scale in bass clef, consisting of four staves. The first three staves show the ascending and descending scales in quarter notes. The fourth staff shows the ascending and descending scales in eighth notes, ending with a double bar line and repeat sign.

E_b

Musical notation for the E-flat major scale in bass clef, consisting of four staves. The first three staves show the ascending and descending scales in quarter notes. The fourth staff shows the ascending and descending scales in eighth notes, ending with a double bar line and repeat sign.